



## Hydraulic Piston Pumps:

### Bent Axis Piston Pumps - BI SERIES

BI Series allow a change in the rotation way in an easy and safe way for all the pump components.

When at work these pumps show a good performance, with very low noise and a continuous flow of the oil.



### Straight Piston Pumps - BH SERIES

BH Series are the result of an accurate design development.

Aber BH Series are very robust, they are equipped with 5 radial and axial bearings. To manufacturer this pumps, Aber uses high resistant material in strategic points.



### Straight Piston Pumps with two Outlets - BHD SERIES

Pump with two outlets, which work on independent pressure and on independent circuits, when use to serve two independent oil circuits.



### Bent Axis Piston Pumps with Two Outlets - BID SERIES

Pump with two outlets, which work on independent pressure and on independent circuits.



## Hydraulic Gear Pumps:

Displacement from 12 to 40 cc/rot - B2 SERIES

Small, Robustness

Gear pump with fixed flow.



Displacement from 38 to 150 cc/rot - B3 SERIES

Medium, Faster.

Gear pump with fixed and bidirectional flow.



With Integrated Valve, Displacement 82 to 105 cc/rot - PV SERIES

Gear Pump with Sensitive Integrated Valve that send all the flow to the tank at 210 bar.



REINFORCED - Displacement from 38 to 150 cc/rot - B3R SERIES

TANDEM - Displacement from 38 to 82 cc/rot - B3D SERIES



## Hydraulic Motors:

Bent Axis Piston Motors - MBI SERIES



Gear Motors - MB3 SERIES



## Hydraulic Valves

Tipping valves

Hydraulic Tipping Valves with: 1 Pressure, 2 Pressures, 3 Pressures.



Bypass Valves



Electrical distributors



Electrovalves



Hight pressure 3 ways flow divider



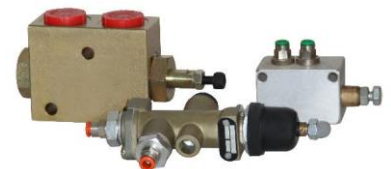
2 ways ball valve



3 ways ball valve



End of stroke valves



Directional Control Valves

## Pneumatic/Mechanical Controls:

Directional valves



Vaccum kits



Pneumatic kits



Pneumatic valves



Hoses

Fittings



Hydraulic kit parts

## Tipper Scissors:

Rear tipper scissor



Three tipper scissor



## Hydraulic Powerpacks and Hydraulic Units:

Hydraulic Power Packs



Hydraulic Units



Power Pack Controls

## Oil Tanks

Tank Side, Capacity from 25l to 80l (TS0)



Tank Side w/Brackets, Capacity from 80l to 200l (TSB)



Tank Rear, Capacity from 10l to 80l (TR0)



Tank Rear w/Brackets, Capacity from 100l to 245l (TRB)



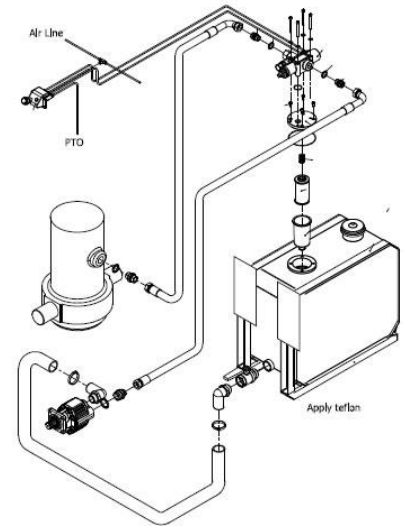
Oil Tank Accessories

## Wet Kits:

### SIDE WET KIT

Gate Valve 1" ½ BSPOT x 1"½ BSPITBI80M7 Oil Hydraulic Bent  
Teflon Pump 81cc/rot  
Oil inlet with thread 90° 1"½ BSPOT xDTCA130 Tipping Valve up to  
2" 130l  
Admission Hose 2" - L=3000mm TSB100FE Side Oil tank  
Cramp for Hose ø50 w/brackets 102l  
Oil inlet with thread 90° 1"¼ BSPOT  
x 2"  
Joint metal-nitril 1" ¼ BSP  
Joint metal-nitril 1" BSP  
Adapter 1"¼ BSPOT x 1" BSPOT  
Adapter 1" BSPOT x 1" BSPOT  
Adjustable adapter 1" BSPIT x 1"  
BSPOT  
Tipping valve fixation screws with  
washer M8x80  
Hose R2 L=2500mm with Female 1"  
BSP right and 90°  
Hose R2 L=4500mm with Female 1"  
BSP right and 90°  
Nylon hose 6x4  
Pneumatic T rapid 6mm  
Quick air fittion 1/8"x6mm  
Adapter 3/4" BSPOT x 1" BSPOT  
Joint metal-nitril 3/4" BSP  
O-ring 35x3,5  
3 ways distributor valve w/warning  
light

Pneumatic end of stroke





## REAR WET KIT

Gate Valve 1" ½ BSPOT x 1"½ BSPITBI80M7 Oil Hydraulic Bent  
Teflon  
Oil inlet with thread 90° 1"½ BSPOT x DTCA130 Tipping Valve up to  
2"  
Admission Hose 2" - L=3000mm  
Cramp for Hose ø50  
Oil inlet with thread 90° 1"¼ BSPOT  
x 2"

Joint metal-nitril 1" ¼ BSP  
Joint metal-nitril 1" BSP  
Adapter 1"¼ BSPOT x 1" BSPOT  
Adapter 1" BSPOT x 1" BSPOT  
Adjustable adapter 1" BSPIT x 1"  
BSPOT

Tipping valve fixation screws with  
washer M8x80

Hose R2 L=2500mm with Female 1"  
BSP right and 90°

Hose R2 L=4500mm with Female 1"  
BSP right and 90°

Nylon hose 6x4

Pneumatic T rapid 6mm

Quick air fittion 1/8"x6mm

Adapter 3/4" BSPOT x 1" BSPOT

Joint metal-nitril 3/4" BSP

O-ring 35x3,5

3 ways distributor valve w/warning  
light

Pump 81cc/rot

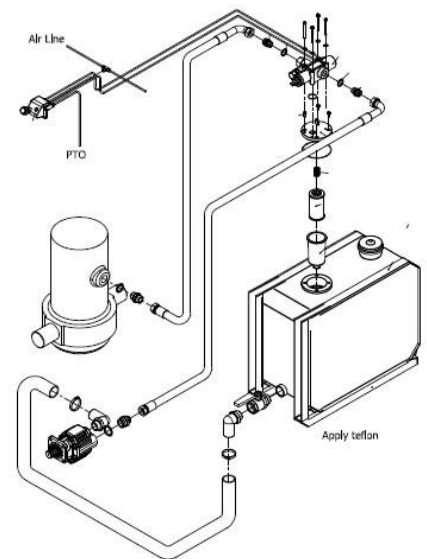
TRB100FE Rear Oil tank  
w/brackets 102l

TRB100FE Rear Oil tank  
w/brackets 102l

## FRONT-END CYLINDER

Load lift: 50Tn

Tail Gate: 6000mm



Pneumatic end of stroke

## Flanges:

Flange



Flange male



Adjustable Flange



Coupling plates to solder

Coupling plates agricultural

Adapter VB - PTO output shaft drive



Adapter UNI - ISO(SE) / ISO(SE) - UNI

